

AFC-6570 Fanless Embedded Computer Based on Intel Atom Processor

AFC-6570, as a high-performance fanless embedded computer product designed and manufactured by NORCO, is a perfect solution for the entrance check-in controller of any metropolitan railway transport system. It is based on Intel 945GSE + ICH7M chipset and Intel Atom N270 processor, with one 200-pin SO-DIMM slot, supporting up to 2GB 400/533 Mhz DDR2 memory, 6 COM ports, 4 USB 2.0 ports, 2 SATA connectors, IDE connector, CF slot and programmable I/O interface. The graphic processor of Intel GMA 950 is integrated in the north bridge of the chipset, providing the computer with both VGA and DVI display ports. It combines excellent performance with low energy consumption, which makes it really appealing to any railway check-in system builder.

Features :

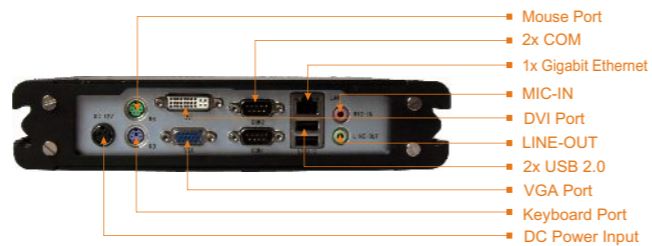
- Fanless design, reducing the noise to a minimum
- Equipped with Intel 945GSE + ICH7M chipset, and low-power Intel Atom N270 processor
- 1x 200-pin SO-DIMM memory slot, supporting 400/533 MHz DDR2 memory up to 2GB
- 1x IDE connector, 2x SATA connectors and 1 x CF slot
- 6x COM ports and 4x USB 2.0 ports
- 1x DB25 connector, supporting 24-way programmable I/O interface (12-way input and 12-way output, adjustable)



AFC-6570 Front Panel :



AFC-6570 Rear Panel :



Europe Office

Mgr. Swinkelsstraat no.99 5623 AP
Eindhoven The Netherlands
Tel: 31-040-2028140
Email: nl@norco.com.cn

US Office

3450 W. Central Ave. #116 Toledo, OH 43606
21015 Commerce Pointe Drive, Walnut, CA 91789
USA
Tel: 909-594-7600
Web: www.habeyusa.com
Email: info@habeyusa.com

Singapore Office

Block 360B, #15-56, Admiralty Dr Singapore 752360
Singapore
Tel: 65-68530809
Email: sales@sg-norco.com

Shenzhen NORCO Intelligent Technology Co., Ltd.

Add: 6th Fl., Bldg A, Taohuayuan Hi-tech Innovation Park,
XiXiang, Bao'An Shenzhen 518102, PRC
Tel: 86-755-27331166
E-mail: sales@norco.com.cn

Beijing Office

1st Floor, No.5 Building, Qunying Technology Park,
No. 8, Shangdi Chuangye Road, Haidian, Beijing
100085, China
Tel: 86-010-82671166
Fax: 86-010-82671188
Email: beijing@norco.com.cn

Shanghai Office

Sutie 302, No.7 Building, New Media Industry Park,
777 Long Wu Road, Shanghai 200232, China
Tel: 86-021-61212088
Fax: 86-021-61212099
Email: shanghai@norco.com.cn



Transportation Product Solutions



www.norco-group.com



AFC-6572 Fanless Embedded Computer with Multi Serial Ports, Based on Intel Atom Processor

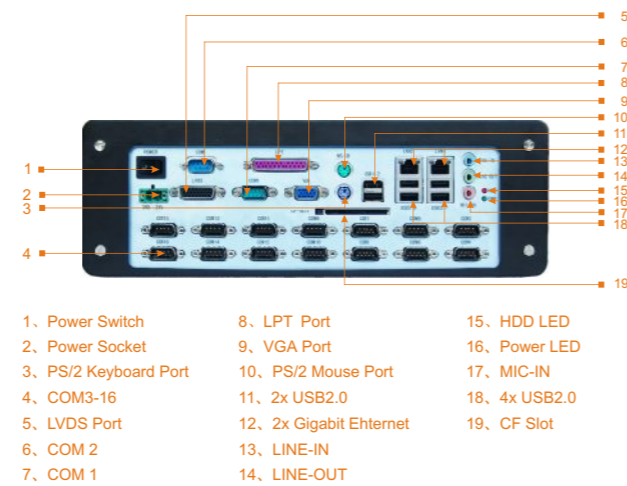
AFC-6572, as a fanless embedded computer product designed and manufactured by NORCO, is a dedicated solution for the entrance check-in controller of any railway transport system. It is based on low-power Intel Atom N270 processor, with abundant connectors available, including VGA/LVDS, PCI, 16x COM, 6x USB, 2x SATA and a CF slots, which allows the end user to connect it to various devices. AFC-6572 has a very compact structure with unique chassis design, giving it great heat-dissipation performance and anti-shake capability, which make it really appealing to any railway check-in system builder.

Features :

- Fanless design, reducing the noise to a minimum
- Equipped with low-power Intel Atom N270 processor, with merely 2.5W TDP rating
- 16x COM (COM3 ~ COM16 support optical-electrical isolation)
- Onboard memory, up to 1GB
- Fully-closed chassis and all-in-one motherboard provide the user with a dust-proof and anti-shake design.
- Wide-range working temperature makes it possible for AFC-6572 to be running continuously in a long period



AFC-6572 Rear Panel :



AFC-6573 Fanless Embedded Computer with Multi-Display Support, Based on Intel Atom Processor

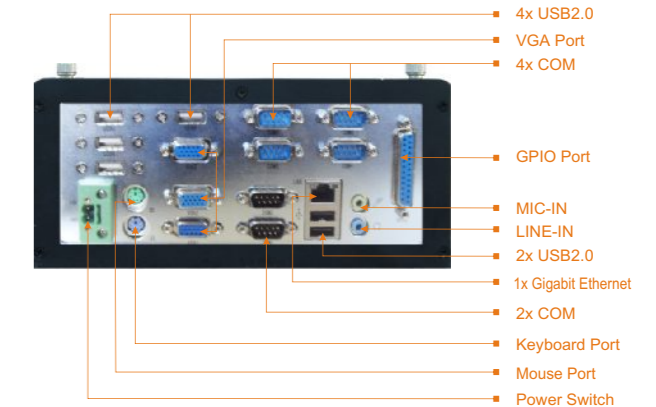
AFC-6573, as a fanless embedded computer product designed and manufactured by NORCO, is a dedicated solution for semi-automatic ticket machine. It is based on low-power Intel Atom N270 processor, with up to 2GB memory and fanless design, which makes it possible for the computer to run continuously in a long period. AFC-6573 has 6 COM ports, 3 standard VGA ports, 8-way digital I/O interface (24-way expandable), 1x PCI slot and 1x PCI-E slot, which make it quite easy to connect the computer to many other devices..

Features :

- Fanless design, reducing the noise to a minimum
- Equipped with Intel 945GSE + ICH7 high-performance chipset and low-power Intel Atom N270 processor (533 MHz FSB), with merely 2.5W TDP rating
- 1x 200-pin SO-DIMM memory slot, supporting 400/533 MHz DDR2 memory up to 2GB
- 3x VGA display ports
- CF slot, DOM and SATA ports
- 6x COM ports (COM3 ~ COM6 support optical-electrical isolation)
- 1x DB25 connector, supporting 8-way programmable I/O interface (24-way expandable)



AFC-6573 Rear Panel :



AFC-6571 Fanless Embedded Computer Based on Intel Atom Processor

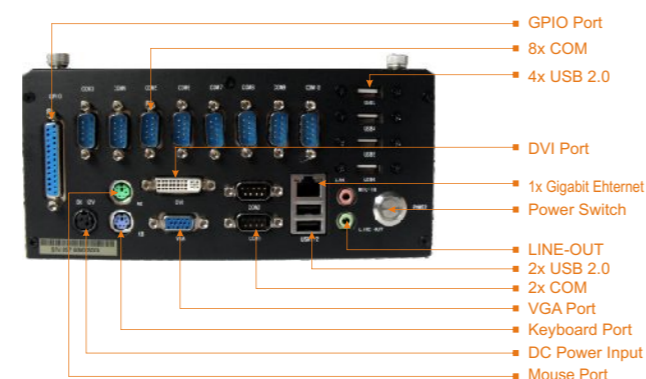
AFC-6571, as an all-in-one fanless embedded computer product designed and manufactured by NORCO, is a dedicated solution for the entrance check-in controller of any railway transport system. It is based on low-power Intel Atom N270 processor, with fanless design, which makes it possible for the computer to run continuously in a long period. AFC-6571 has a very compact structure with unique dust-proof chassis design, giving it great heat-dissipation performance under different conditions. And the abundant I/O connectors of it, namely, the 10 RS232 ports and 6 USB ports make it capable of connecting to various devices, including bill and coin identifier, change machine, LED billboard and touch screen etc, which make it really appealing to any railway check-in system builder.

Features :

- Fanless design, reducing the noise to a minimum
- Equipped with Intel 945GSE + ICH7 high-performance chipset and low-power Intel Atom N270 processor, with merely 2.5W TDP rating
- 1x 200-pin SO-DIMM memory slot, supporting 400/533 MHz DDR2 memory up to 2GB
- Intel 945GSE integrated graphic controller, with VGA + DVI or VGA + LVDS display output
- 1x IDE connector, 2x SATA connectors and 1 x CF slot
- 10x COM ports (COM3 ~ COM6 support optical-electrical isolation)
- 1x DB25 connector, supporting 24-way programmable I/O interface (12-way input and 12-way output, adjustable)



AFC-6571 Rear Panel :



AFC-6574 Fanless Embedded Computer with Dual-Display Support

AFC-6574, as a fanless embedded computer product designed and manufactured by NORCO, is a dedicated solution for EQM. It is based on low-power Intel Atom N270 processor (1.6GHz), with fanless design, which makes it possible for the computer to run continuously in a long period. AFC-6574 has one VGA and one DVI display ports, supporting independent dual display mode, which makes it capable of connecting multi display devices. It also features 6x COM ports, 6x USB ports and 8-way digital I/O interface (24-way expandable), which make it quite easy to connect the computer to many other devices, like display devices, printers and alarms etc.

Features :

- Fanless design, reducing the noise to a minimum
- Equipped with Intel 945GSE + ICH7 high-performance chipset and low-power Intel Atom N270 processor (533 MHz FSB), with merely 2.5W TDP rating
- 1x 200-pin SO-DIMM memory slot, supporting 400/533 MHz DDR2 memory up to 2GB
- 1x VGA and 1x DVI display ports, supporting dual-display
- CF slot, DOM and SATA ports
- 6x COM ports (COM3 ~ COM6 support optical-electrical isolation)
- 1x DB25 connector, supporting 8-way programmable I/O interface (24-way expandable)



AFC-6574 Rear Panel :

