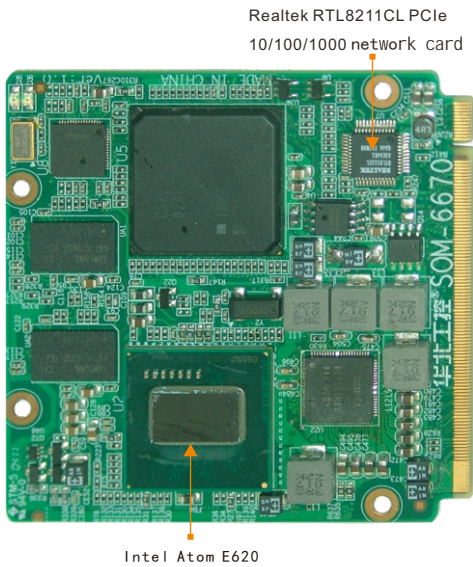


Embedded Industrial Motherboard

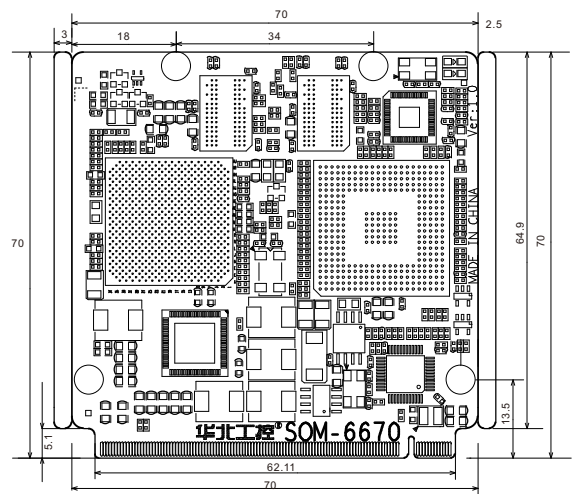
SOM-6670 Qseven Standard Atom E6xx Level Computer Module



Product:

- ◆ Embedded Intel Atom E6xx series processor, maximum support for 1.6 GHz main frequency
- ◆ Support 512MB DDR2 800MHz on board system memory
- ◆ Support 3xPCIe x1,1xLPC, 1xSDVO, HD Audio and 1xSDIO
- ◆ Support 2xSATAII, 6xUSB, 1xGigabit Ethernet, 1xLVDS

Dimensions:



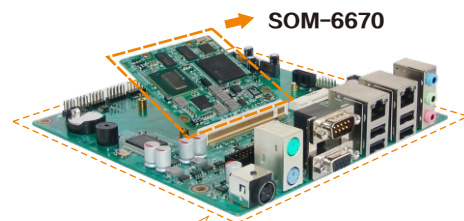
Specifications:

- ◆CPU
Intel Atom E620 600MHz/E640 1.0GHz/E660 1.3GHz /E680 1.6GHz
- ◆Chipset
Intel Atom E6xx+EG20T
- ◆Memory
On board 512MB DDR2 800MHz system memory
- ◆BIOS
AMI BIOS
- ◆Ethernet
Realtek RTL8211CL,10/100/1000Mbps,1x LAN
- ◆Graphic Controller
Intel Atom E6xx Series integration
- ◆Display Port
1x LVDS provides standard LVDS signal, Expansion is provided by the carrier board via connecting finger
1x SDVO provides standard SDVO bus signal, Expansion is provided by the carrier board via connecting finger
- ◆Audio
Provides standard HDA signal, Expansion is provided by the carrier board via connecting finger
- ◆I/O Port
2x SATAII, Expansion is provided by the carrier board via connecting finger
6x USB2.0, Expansion is provided by the carrier board via connecting finger
- ◆Expansion Port
Provides 3x standard PCIe x1signal, Expansion is provided by the carrier board via connecting finger
Provides 1x standard LPC signal, Expansion is provided by the carrier board via connecting finger
Provides 1x standard SDIO signal, Expansion is provided by the carrier board via connecting finger
Provides 1x standard SDVO signal, Expansion is provided by the carrier board via connecting finger
Provides 1x standard IC signal, Expansion is provided by the carrier board via connecting finger
Provides 1x standard SMBus signal, Expansion is provided by the carrier board via connecting finger
- ◆Watchdog
N/A
- ◆Power Supply
Single+5V power supply via connecting finger, 5VSB
- ◆Temperature
Operating Temperature : 0°C~60°C
Storage Temperature: -40°C~80°C
- ◆Humidity
5%~95% RH,non-condensing
- ◆Size
70mmx70mm

Ordering Information:

Part Number	Description
2.06.0667010009	SOM-6670 V1.0 end product

SOMB-073 Qseven System Custom Carrier Board



Qseven System Custom Carrier Board

- ◆ Qseven Carrier Board
- ◆ Qseven standard module bus interface
- ◆ Rich I/O interface extensions
- ◆ With + 12V single power supply
- ◆ Size: 170mmx170mm