

Embedded Industrial Motherboard

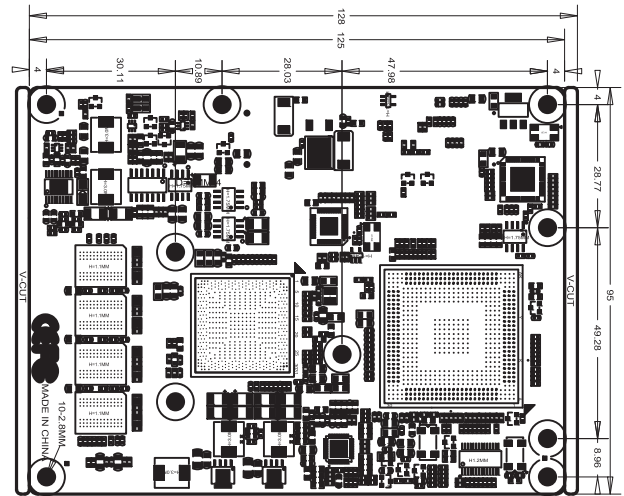
SOM-6938 Based on COM Express Type 2 Cedar Trail Platform Core Module



Product :

- ◆ Based on Intel Cedar Trail platform, on board Intel Atom N2800/D2550 processor
- ◆ On board DDR3 high speed memory, up to 4GB
- ◆ Provide LVDS, VGA, DDI (DVI/HDMI/DP) video out, dual independent display supported
- ◆ Compliance with COM Express type 2 spec
- ◆ Modular Design, paired with various carrier boards
- ◆ Mini Size at 95mmx125mm
- ◆ Rich I/O: 5x PCIe, 4x PCI, 4x SATAII, 8x USB2.0, 1x VGA, 1x LVDS, 2x DDI, 1x LPC, 1x 10/100/1000Mbps LAN etc.

Dimension :



Specification:

- ◆ CPU
Intel Atom N2800/D2550 processor
- ◆ Chipset
Intel ICH10R
- ◆ Memory
Onboard DDR3 memory up to 4G
- ◆ BIOS
AMI BIOS
- ◆ Ethernet
Intel 82583V 10/100/1000Mbps, via COM-E slot expansion
- ◆ Graphic Controller
Integrated Intel GMA 3650/3600 GPU, can share up to 1G ARM
- ◆ Display Port
1x LVDS provides single-channel 18/24Bit LVDS signal via COM-E Slot
LVDS resolution up to: Atom N2xxx --18bit (1366x768@60Hz)
Atom D2xxx--24bit (1440x900@60Hz)
2x DDI (HDMI/DVI/Display Port), via COM-E slot, resolution up to: 1920x1200
1x VGA signal via COM-E slot, resolution up to: 1920x1200
- ◆ Audio
Intel® High Definition Audio, via COM-E slot expansion
- ◆ I/O Port
4x SATAII via COM-E slot
8x USB2.0 via COM-E slot
- ◆ Expansion Port
 - 5x PCIe x1 signal via COM-E slot
 - 4x PCI2.3 signal (32bit/33MHz), via COM-E slot
 - 1x standard LPC, via COM-E slot
- ◆ Power Supply
5V Standby +12V power supply (via COM-E slot)
- ◆ Temperature
Operating Temperature: 0°C ~ 60°C
Storage Temperature: -40°C ~ 85°C
- ◆ Humidity
5% ~ 95%, RH, non-condensing
- ◆ Size
95mm x 125mm