

Embedded Industrial Motherboard

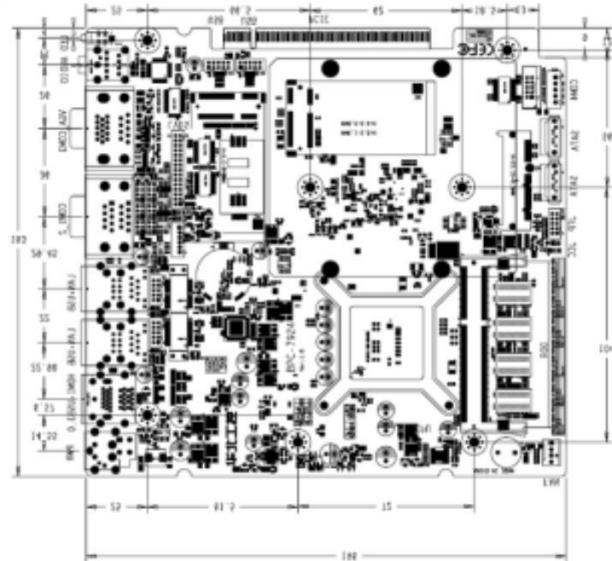
BPC-7924 Based on Intel HM77/HM76/QM77 Chipset Embedded Industrial Motherboard



Product:

- ◆ Based on Intel HM77/HM76/QM77 chipset
- ◆ Support Intel Ivy Bridge Gen3 /Sandy Bridge Gen2 i3/i5 /i7 processor
- ◆ On board 4GB memory chip, 1xsingle channel SO-DIMM memory slot, support DDRIII 1066/1333/1600MHz, memory up to 8GB
- ◆ Support VGA+HDMI+LVDS display port, and independent dual display
- ◆ Provide: 2xRS232/RS422/RS485, 2xRS232, 2xSATA3.0, 1xSATA2.0, 2xUSB3.0, 8xUSB2.0, 2xLAN, support 1xMic_in, 1xLineout, 8Bits GPIO
- ◆ Expansion port: 2xMINIPcie (3G/WiFi/mSATA) 1xPCIE(ACP-241 micro card)
- ◆ Size: 183mm×196mm

Dimension:



Specification:

- ◆ CPU
Support Intel Ivy Bridge Gen3/Sandy Bridge Gen 2i3/i5/i7 processor
- ◆ Chipset
Intel HM77/HM76/QM77
- ◆ Memory
On board 4GB memory chip, 1x single channel SO-DIMM memory slot, support DDRIII1066/1333/1600MHz, memory up to 8GB
- ◆ Storage
2xSATA3.0, 1xSATA2.0
- ◆ BIOS
8MBSPIBIOS
- ◆ Super I/O
With ITE8783I/O chip
- ◆ Ethernet
IntelW82583V, 10/100/1000Mbps, 2xLAN
- ◆ Graphic Controller
Integrated CPU
- ◆ Display port
Support VGA+HDMI+LVDS display port, and independent dual display
- ◆ Audio
With ALC662VD0HDA audio control chip supports MIC in, Line out
- ◆ I/O Interface
4xCOM (COM1~2 support RS232/RS422/RS485, COM3~4 support RS232) , 2xSATA3.0, 1xSATA2.0, 2xUSB3.0, 8xUSB2.0, 2xLAN, support 1xMic_in,1xSpeaker_out, 8Bits GPIO
- ◆ Expansion Port
2xMINI PCIe (3G/WiFi/mSATA applicable) 1xPCIE(ACP-241 micro card applicable)
- ◆ Watchdog
Supports hardware reset
- ◆ GPIO
8Bits GPIO
- ◆ Fan Interface

- ◆ Power
Supply
Single power supply+12V, 4pin square sockets
- ◆ Temperature
Operating Temperature: 0°C~60°C Storage Temperature: -40°C~85°C
- ◆ Humidity
5%~95%RH, non condensing
- ◆ Size
183mm×196mm